

SAUK WATERSHED



Created by:
Todd County GIS
215 1st Ave S, Ste. 102
Long Prairie, MN 56347
320-732-4248

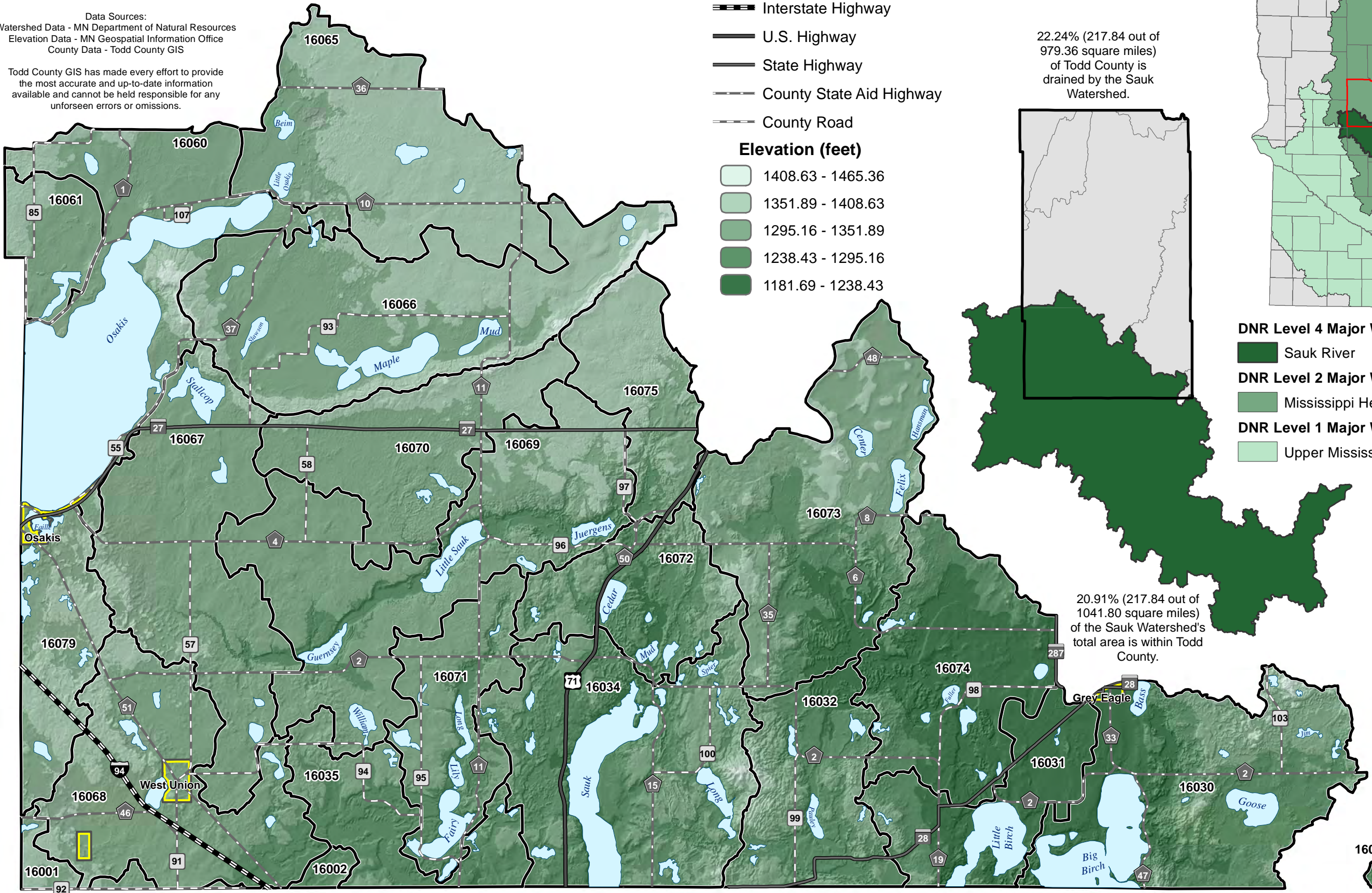
Data Sources:
Watershed Data - MN Department of Natural Resources
Elevation Data - MN Geospatial Information Office
County Data - Todd County GIS

Todd County GIS has made every effort to provide the most accurate and up-to-date information available and cannot be held responsible for any unforeseen errors or omissions.

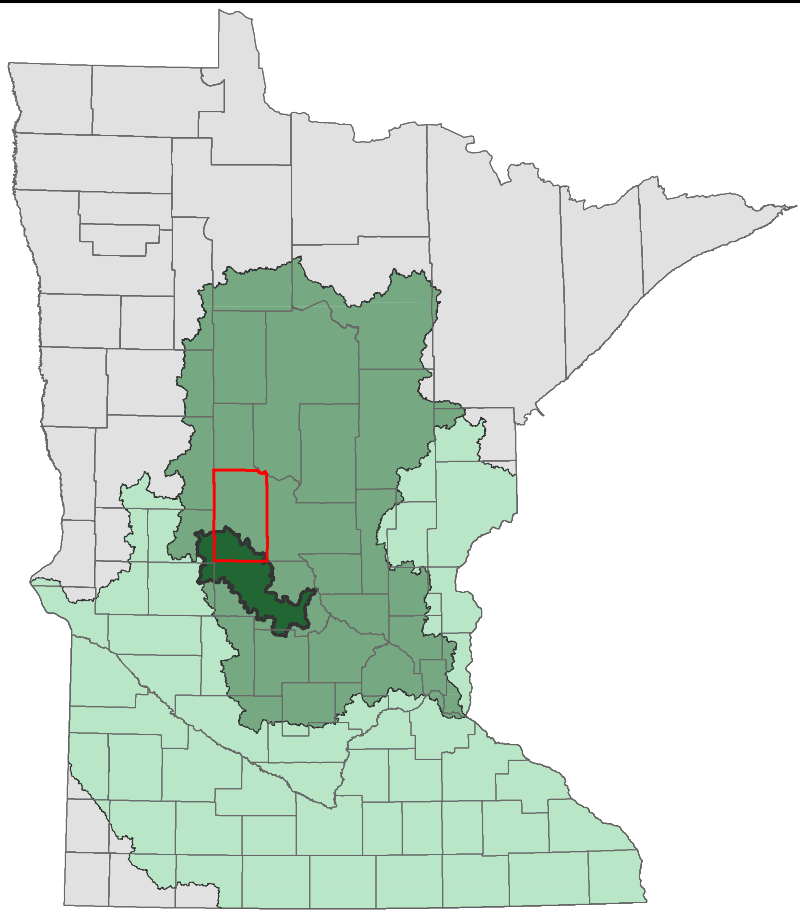
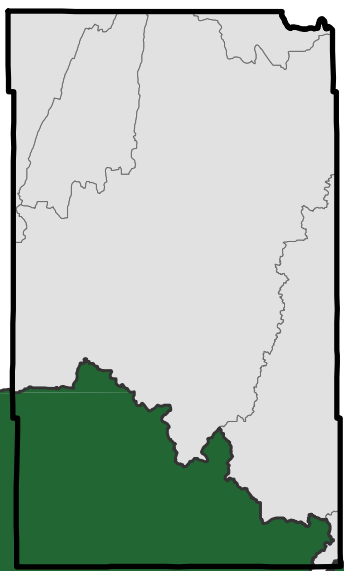
- Minor Watershed Boundary
- Lake
- City Limit
- Interstate Highway
- U.S. Highway
- State Highway
- County State Aid Highway
- County Road

Elevation (feet)

- 1408.63 - 1465.36
- 1351.89 - 1408.63
- 1295.16 - 1351.89
- 1238.43 - 1295.16
- 1181.69 - 1238.43



22.24% (217.84 out of 979.36 square miles) of Todd County is drained by the Sauk Watershed.



- DNR Level 4 Major Watershed
- DNR Level 2 Major Watershed
- DNR Level 1 Major Watershed
- Todd County Boundary
- County Boundary

20.91% (217.84 out of 1041.80 square miles) of the Sauk Watershed's total area is within Todd County.

MINOR WATERSHEDS

ID #	Stream Name	Area (sq. miles)	Percent of Total
16001	Unknown	1.15	0.53%
16002	Ashley Creek	0.52	0.24%
16027	Unknown	0.22	0.10%
16030	From Big Birch Lake	15.64	7.18%
16031	Little Birch Lake	7.03	3.23%
16032	Prairie Creek	8.08	3.71%
16034	Sauk Lake	17.27	7.93%
16035	Ashley Creek	6.02	2.76%
16060	Lake Osakis	16.72	7.68%
16061	Crooked L Ditch	3.34	1.53%
16065	From Little Lake Osakis	13.80	6.33%
16066	Boss Creek	17.86	8.20%
16067	Sauk River	14.98	6.88%
16068	Silver Creek	12.92	5.93%
16069	Sauk River	18.57	8.52%
16070	Unknown	9.54	4.38%
16071	From Fairy Lake	7.44	3.41%
16072	Sauk River	6.86	3.15%
16073	Trout Creek	16.49	7.57%
16074	Prairie Creek	11.28	5.18%
16075	Unknown	6.13	2.81%
16079	Unknown	5.99	2.75%
Total		217.84	100.00%



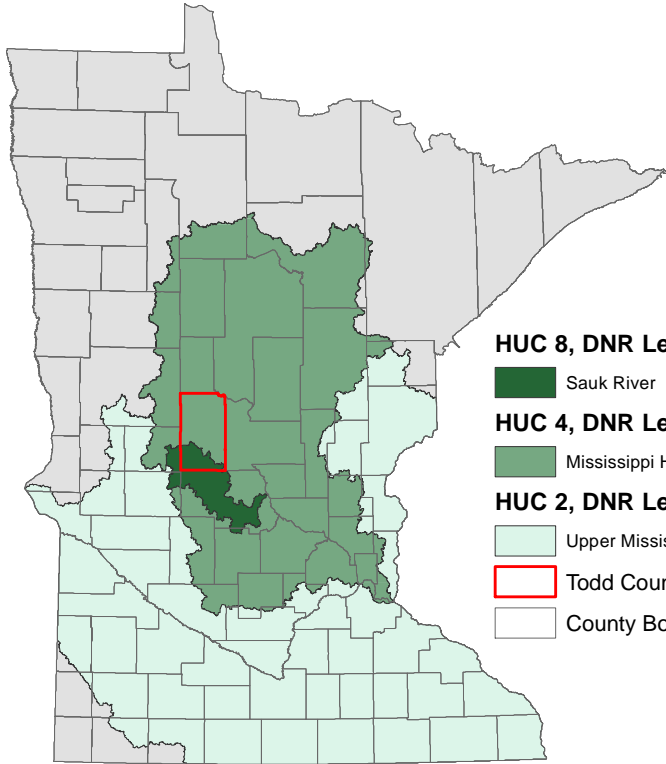
Sauk Watershed

Minor Watersheds

Created by:
 Todd County GIS
 215 1st Ave S, Ste. 102
 Long Prairie, MN 56347
 320-732-4248

Data Sources:
 Watershed Data - MN DNR
 Impaired Waters - MN PCA
 County Data - Todd County GIS

Todd County GIS has made every effort to provide the most accurate and up-to-date information available and cannot be held responsible for any unforeseen errors or omissions.



HUC 8, DNR Level 4 Major Watershed

Sauk River

HUC 4, DNR Level 2 Major Watershed

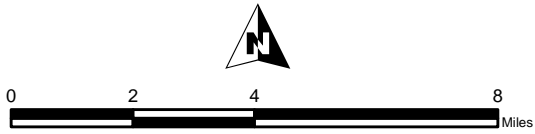
Mississippi Headwaters

HUC 2, DNR Level 1 Major Watershed

Upper Mississippi

Todd County Boundary

County Boundary

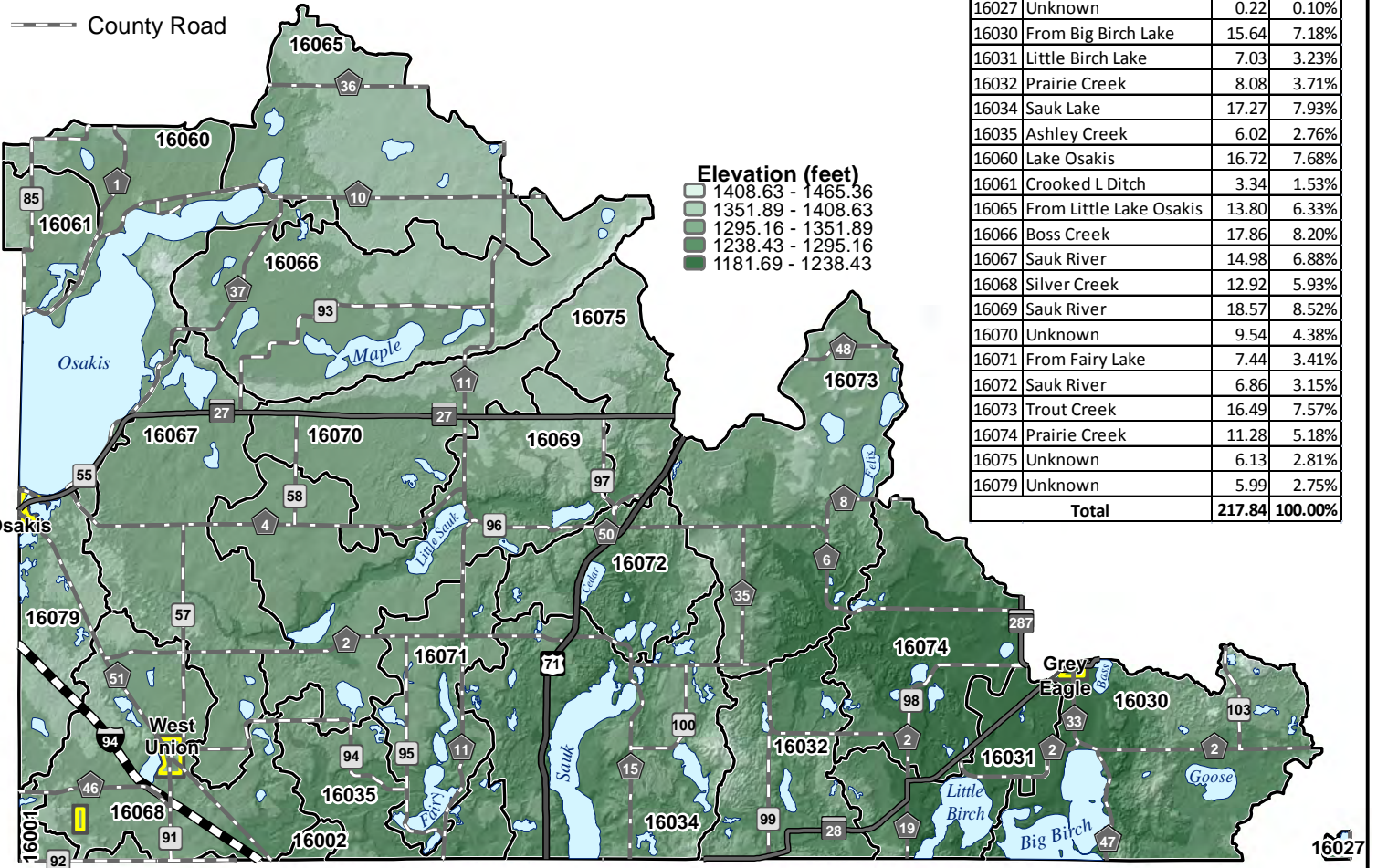


- Minor Watershed Boundary
- Lake
- City Limit
- Interstate Highway
- U.S. Highway
- State Highway
- County State Aid Highway
- County Road

Minor Watersheds

ID #	Stream Name	Area (sq miles)	Percent of Total
------	-------------	-----------------	------------------

16001	Unknown	1.15	0.53%
16002	Ashley Creek	0.52	0.24%
16027	Unknown	0.22	0.10%
16030	From Big Birch Lake	15.64	7.18%
16031	Little Birch Lake	7.03	3.23%
16032	Prairie Creek	8.08	3.71%
16034	Sauk Lake	17.27	7.93%
16035	Ashley Creek	6.02	2.76%
16060	Lake Osakis	16.72	7.68%
16061	Crooked L Ditch	3.34	1.53%
16065	From Little Lake Osakis	13.80	6.33%
16066	Boss Creek	17.86	8.20%
16067	Sauk River	14.98	6.88%
16068	Silver Creek	12.92	5.93%
16069	Sauk River	18.57	8.52%
16070	Unknown	9.54	4.38%
16071	From Fairy Lake	7.44	3.41%
16072	Sauk River	6.86	3.15%
16073	Trout Creek	16.49	7.57%
16074	Prairie Creek	11.28	5.18%
16075	Unknown	6.13	2.81%
16079	Unknown	5.99	2.75%
Total		217.84	100.00%



Sauk Watershed Impaired Waters

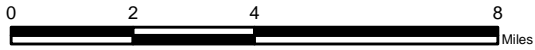
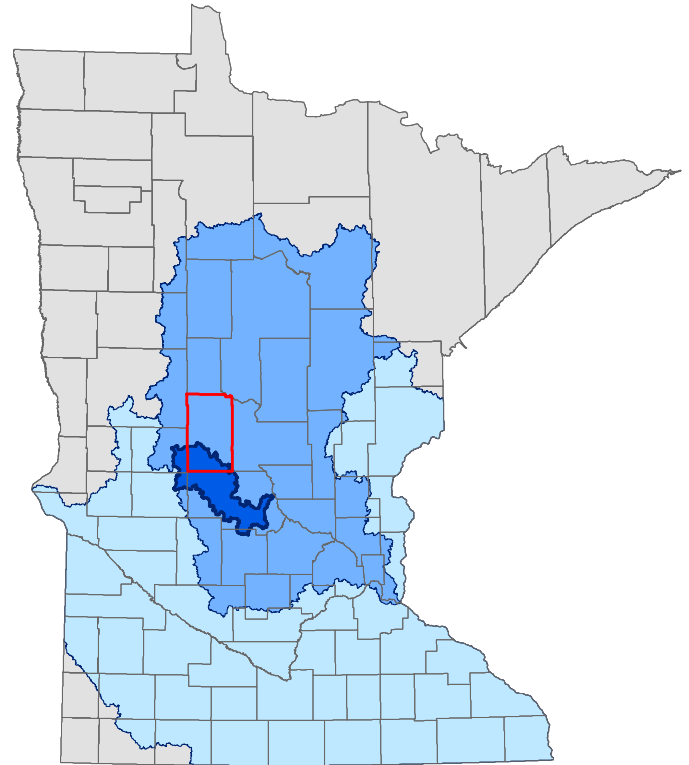
Created by:

Todd County GIS
215 1st Ave S, Ste. 102
Long Prairie, MN 56347
320-732-4248

Data Sources:

Watershed Data - MN DNR
Impaired Waters - MN PCA
County Data - Todd County GIS

Todd County GIS has made every effort to provide the most accurate and up-to-date information available and cannot be held responsible for any unforeseen errors or omissions.



- | | |
|--------------------------|--------------------------|
| Impaired Stream | Interstate Highway |
| Impaired Lake | U.S. Highway |
| Perennial Stream | State Highway |
| Intermittent Stream | County State Aid Highway |
| Lake | County Road |
| Minor Watershed Boundary | |
| City Limit | |

HUC 8, DNR Level 4 Major Watershed

Sauk River

HUC 4, DNR Level 2 Major Watershed

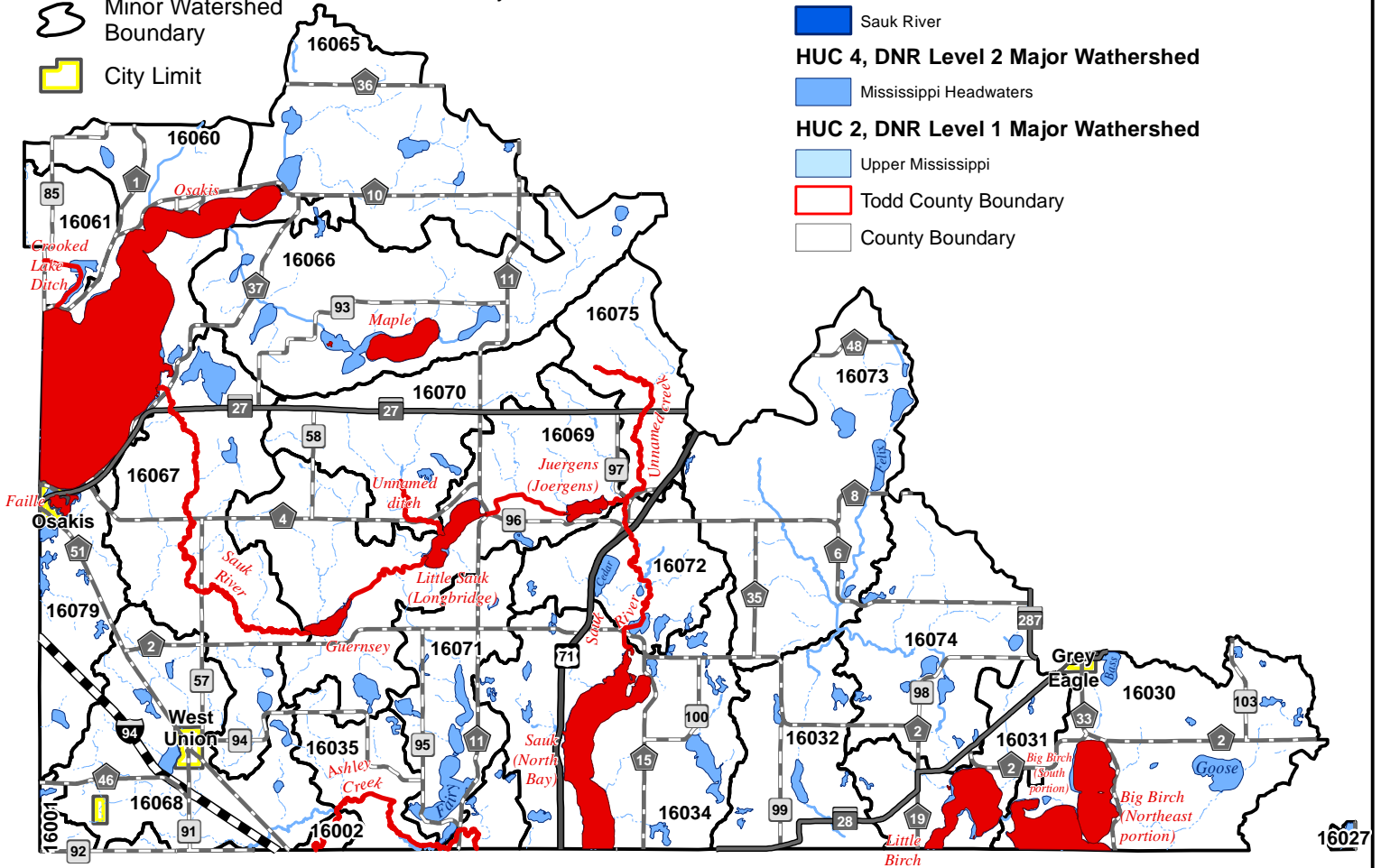
Mississippi Headwaters

HUC 2, DNR Level 1 Major Watershed

Upper Mississippi

Todd County Boundary

County Boundary

















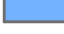


Sauk Watershed

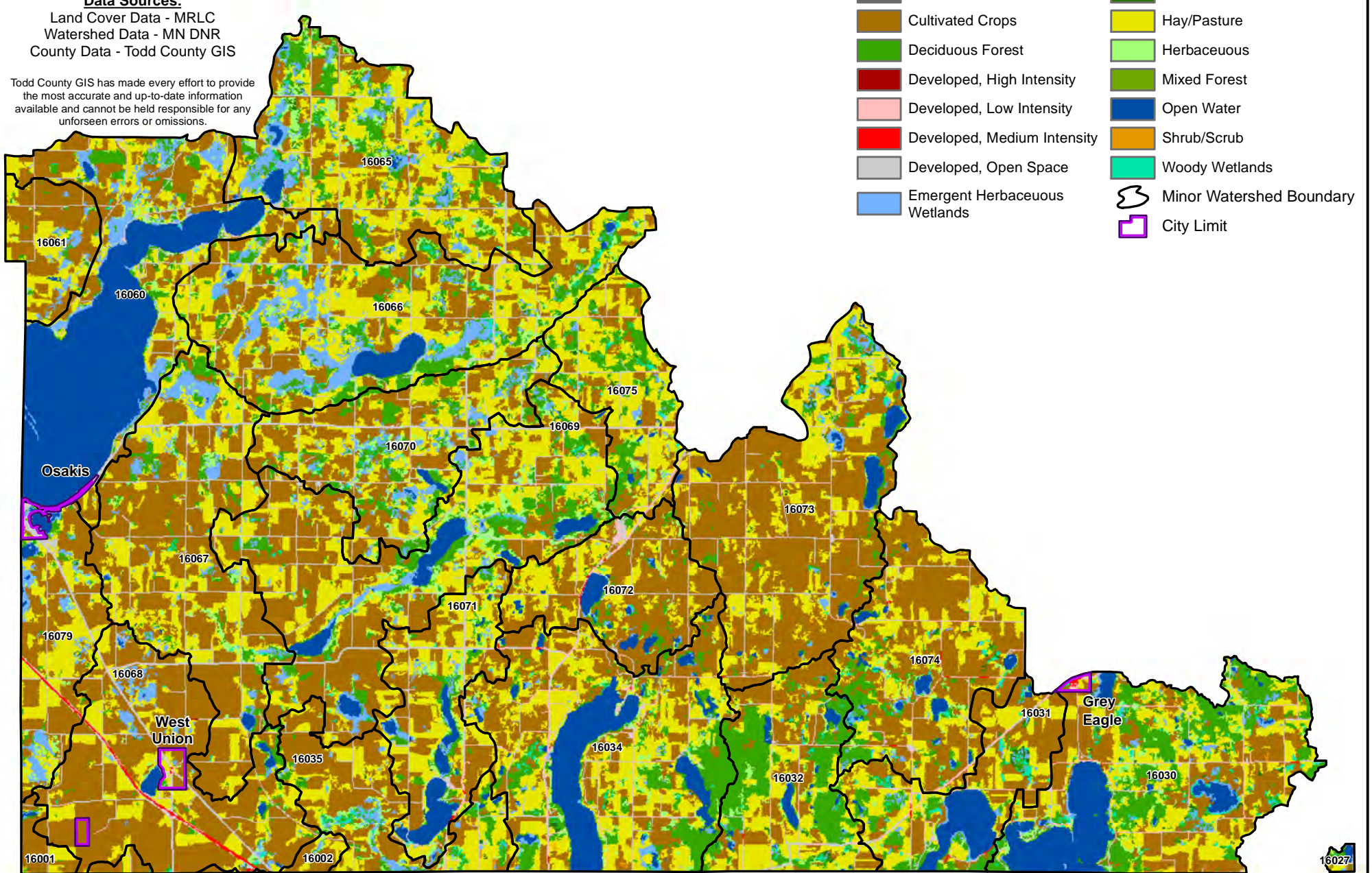
Land Cover

Created by:
 Todd County GIS
 215 1st Ave S, Ste. 102
 Long Prairie, MN 56347
 320-732-4248

Data Sources:
 Land Cover Data - MRLC
 Watershed Data - MN DNR
 County Data - Todd County GIS

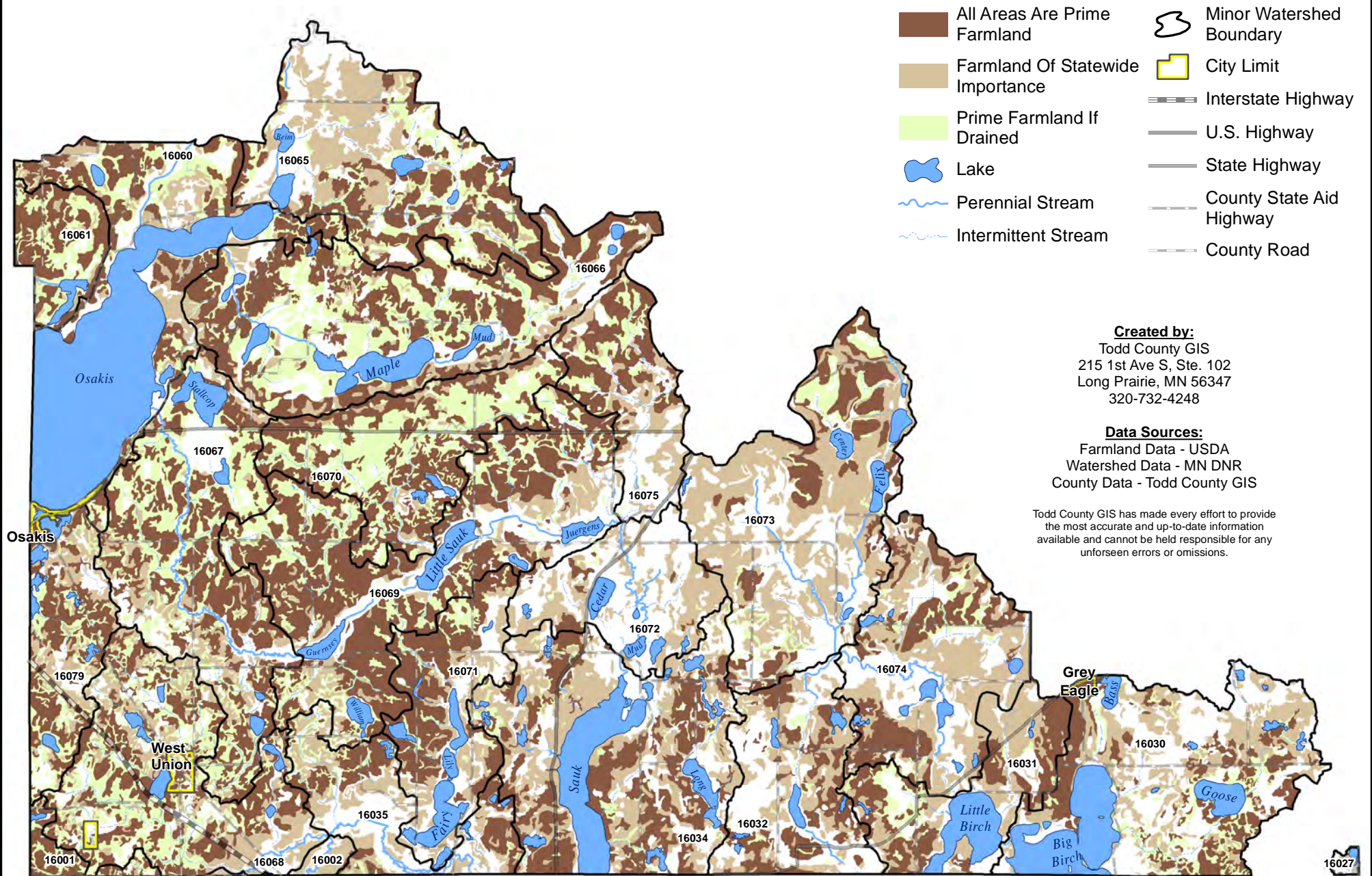
Todd County GIS has made every effort to provide the most accurate and up-to-date information available and cannot be held responsible for any unforeseen errors or omissions.

- | | |
|--|--|
|  Barren Land |  Evergreen Forest |
|  Cultivated Crops |  Hay/Pasture |
|  Deciduous Forest |  Herbaceous |
|  Developed, High Intensity |  Mixed Forest |
|  Developed, Low Intensity |  Open Water |
|  Developed, Medium Intensity |  Shrub/Scrub |
|  Developed, Open Space |  Woody Wetlands |
|  Emergent Herbaceous Wetlands |  Minor Watershed Boundary |
| |  City Limit |



Sauk Watershed

Prime Farmland



- All Areas Are Prime Farmland
- Farmland Of Statewide Importance
- Prime Farmland If Drained
- Lake
- Perennial Stream
- Intermittent Stream
- Minor Watershed Boundary
- City Limit
- Interstate Highway
- U.S. Highway
- State Highway
- County State Aid Highway
- County Road

Created by:
 Todd County GIS
 215 1st Ave S, Ste. 102
 Long Prairie, MN 56347
 320-732-4248

Data Sources:
 Farmland Data - USDA
 Watershed Data - MN DNR
 County Data - Todd County GIS

Todd County GIS has made every effort to provide the most accurate and up-to-date information available and cannot be held responsible for any unforeseen errors or omissions.



















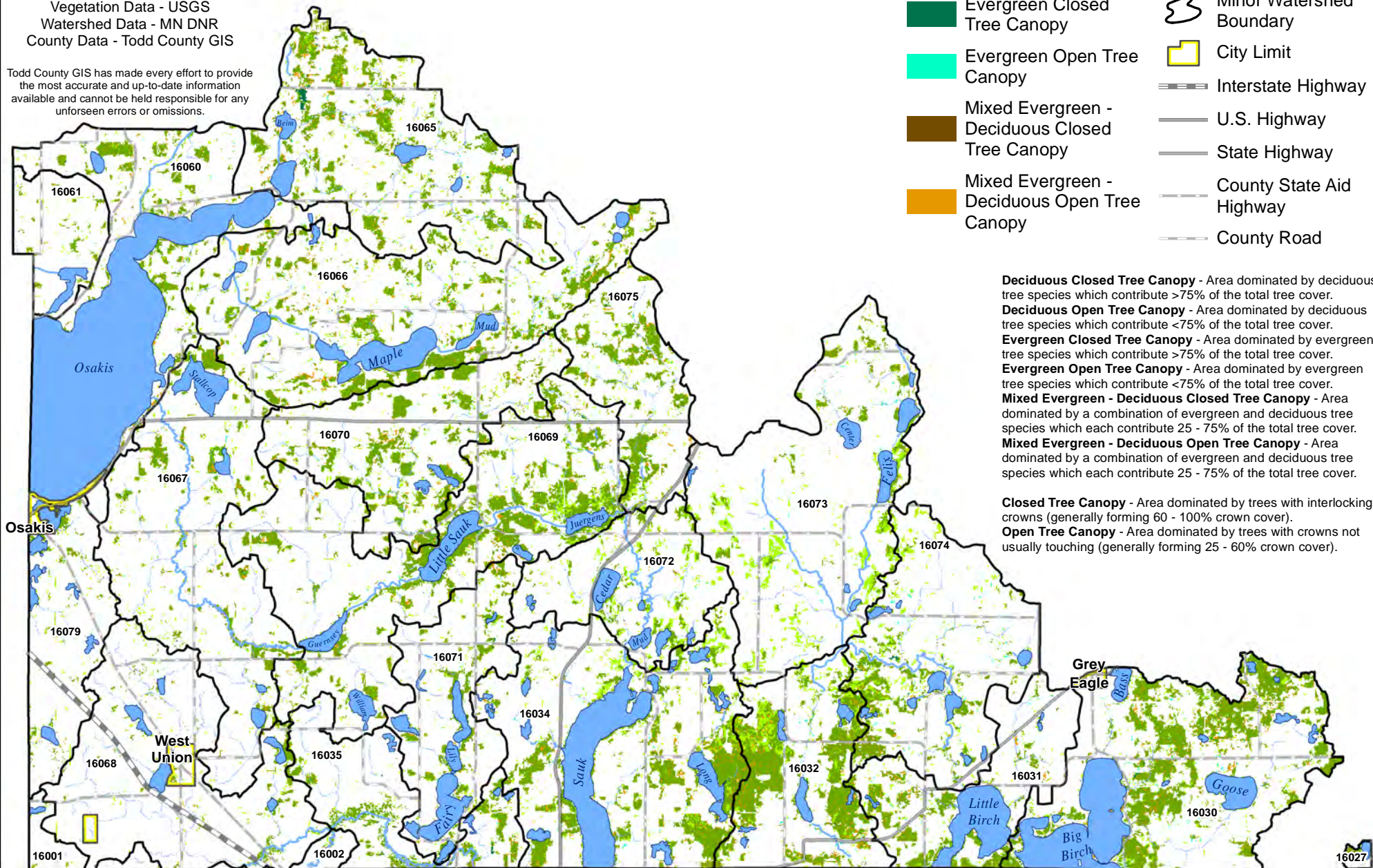
Created by:
 Todd County GIS
 215 1st Ave S, Ste. 102
 Long Prairie, MN 56347
 320-732-4248

Sauk Watershed Forests

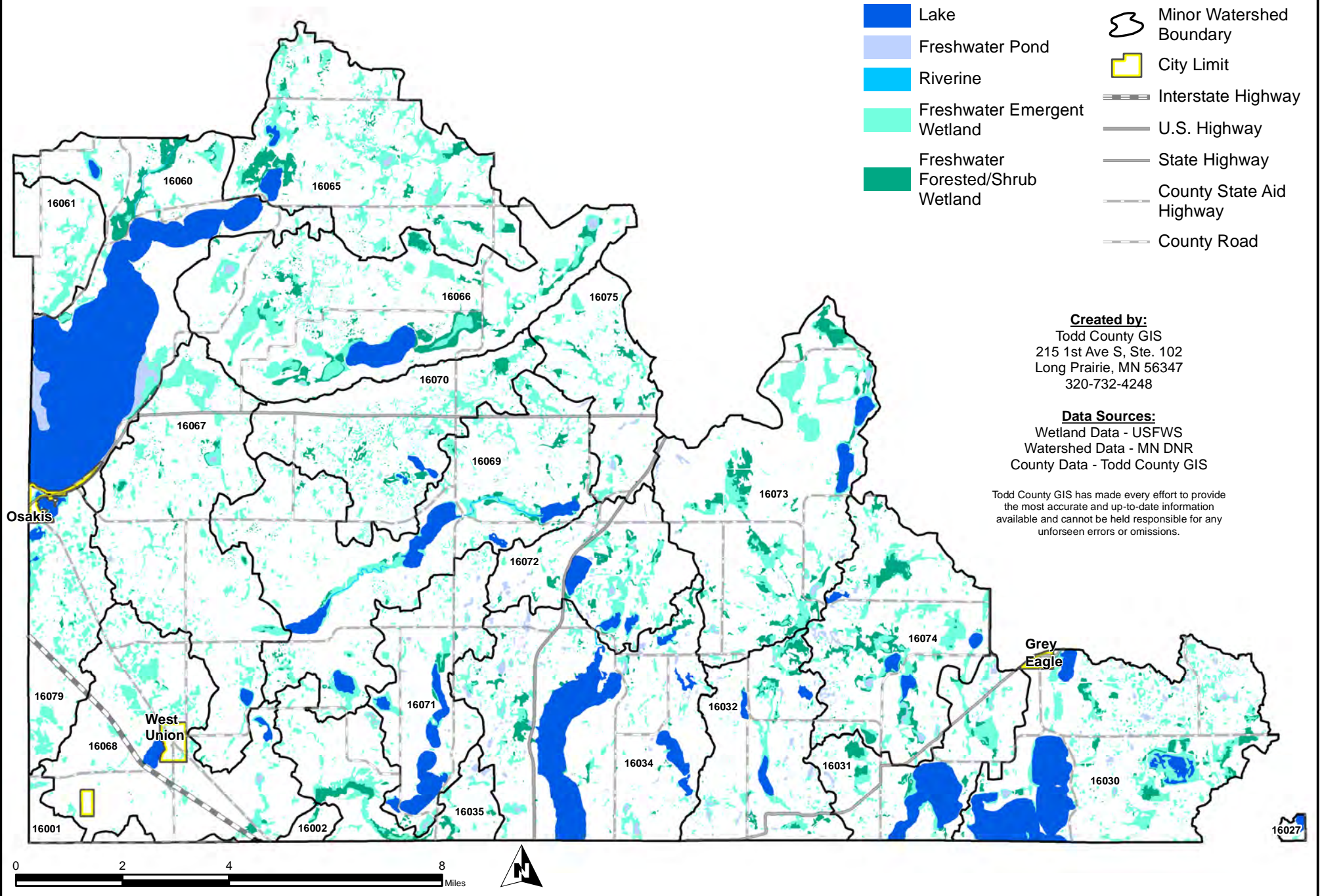
Data Sources:
 Vegetation Data - USGS
 Watershed Data - MN DNR
 County Data - Todd County GIS

Todd County GIS has made every effort to provide the most accurate and up-to-date information available and cannot be held responsible for any unforeseen errors or omissions.

- | | | | |
|---|--|---|--------------------------|
|  | Deciduous Closed Tree Canopy |  | Perennial Stream |
|  | Deciduous Open Tree Canopy |  | Intermittent Stream |
|  | Evergreen Closed Tree Canopy |  | Lake |
|  | Evergreen Open Tree Canopy |  | Minor Watershed Boundary |
|  | Mixed Evergreen - Deciduous Closed Tree Canopy |  | City Limit |
|  | Mixed Evergreen - Deciduous Open Tree Canopy |  | Interstate Highway |
| | |  | U.S. Highway |
| | |  | State Highway |
| | |  | County State Aid Highway |
| | |  | County Road |



Sauk Watershed Wetlands



Sauk Watershed Native Plant Communities

Created by:
Todd County GIS
215 1st Ave S, Ste. 102
Long Prairie, MN 56347
320-732-4248

Data Sources:
MN County Biological Survey &
Watershed Data - MN DNR
County Data - Todd County GIS

Todd County GIS has made every effort to provide the most accurate and up-to-date information available and cannot be held responsible for any unforeseen errors or omissions.

-  Alder Swamp / Forested Peatland Complex
-  Black Ash - (Red Maple) Seepage Swamp
-  Black Ash - Yellow Birch - Red Maple - Basswood Swamp (Eastcentral)
-  Cattail - Sedge Marsh (Northern)
-  Central Mesic Hardwood Forest (Eastern)
-  Dry Sand - Gravel Oak Savanna (Southern)
-  Dry Sand - Gravel Prairie (Southern)
-  Graminoid - Sphagnum Rich Fen (Basin)
-  Gravel/Cobble Beach (Inland Lake)
-  Marsh - Open Water Complex
-  Meadow - Marsh - Fen - Swamp Complex
-  Northern Rich Fen (Basin)
-  Northern Shrub Shore Fen
-  Northern Wet Meadow/Carr
-  Pin Oak - Bur Oak Woodland
-  Red Oak - Basswood Forest (Noncalcareous Till)
-  Sedge Meadow
-  Shrub Swamp Complex
-  Southern Dry Prairie
-  Tamarack Swamp (Southern)
-  Willow - Dogwood Shrub Swamp
-  Perennial Stream
-  Intermittent Stream
-  Lake
-  Minor Watershed Boundary
-  City Limit
-  Interstate Highway
-  U.S. Highway
-  State Highway
-  County State Aid Highway
-  County Road

